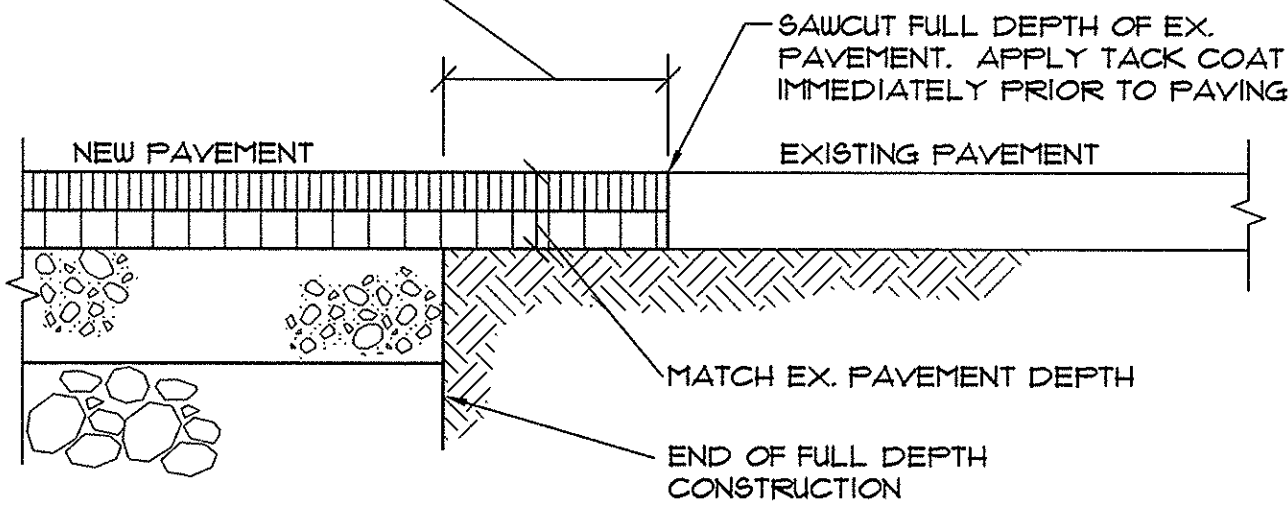


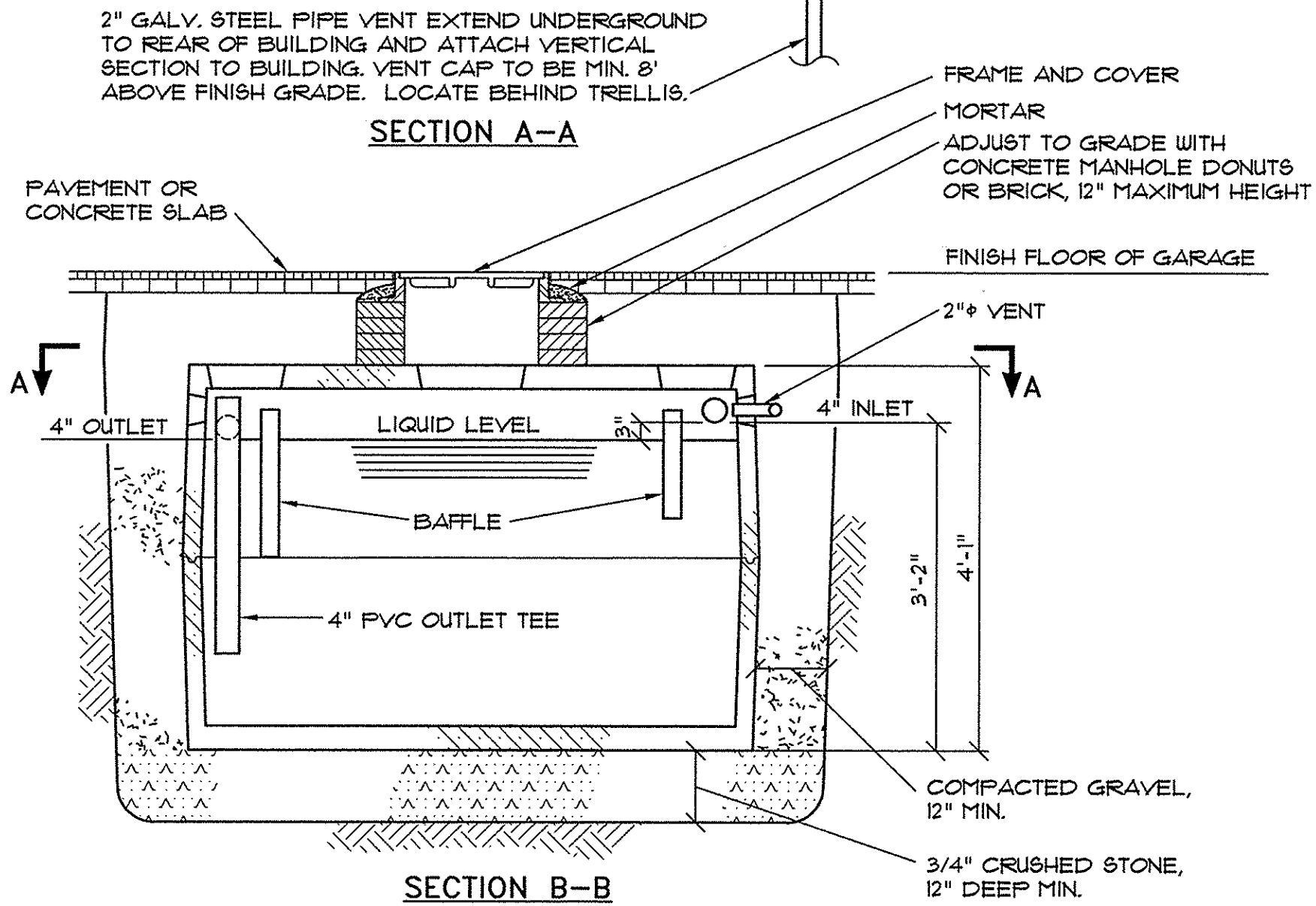
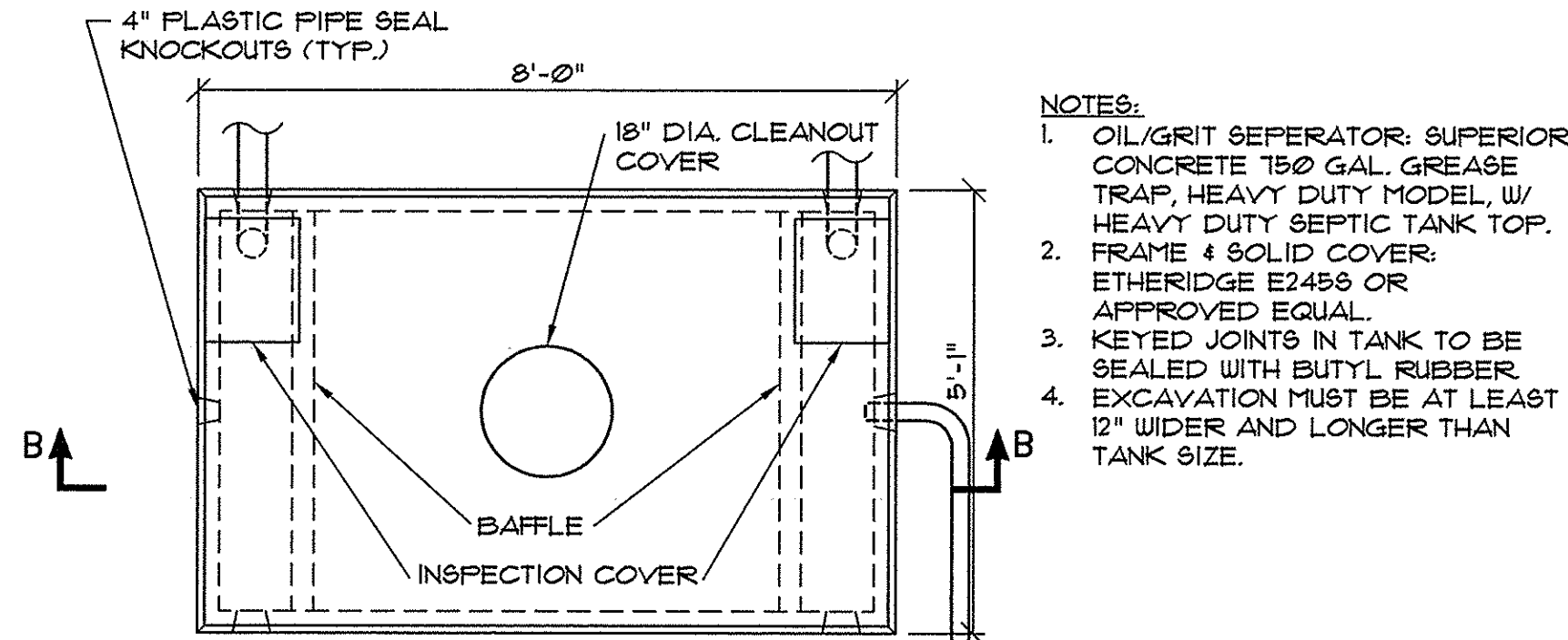


Reviewed for Code Compliance
Inspection Division
Approved with Conditions
Date: 05/16/14

3'-0" (MIN.) BEYOND THE LIMIT
OF FULL DEPTH CONSTRUCTION
OR BEYOND THE GREATEST
EXTENT OF DAMAGE TO EX.
PAVEMENT.

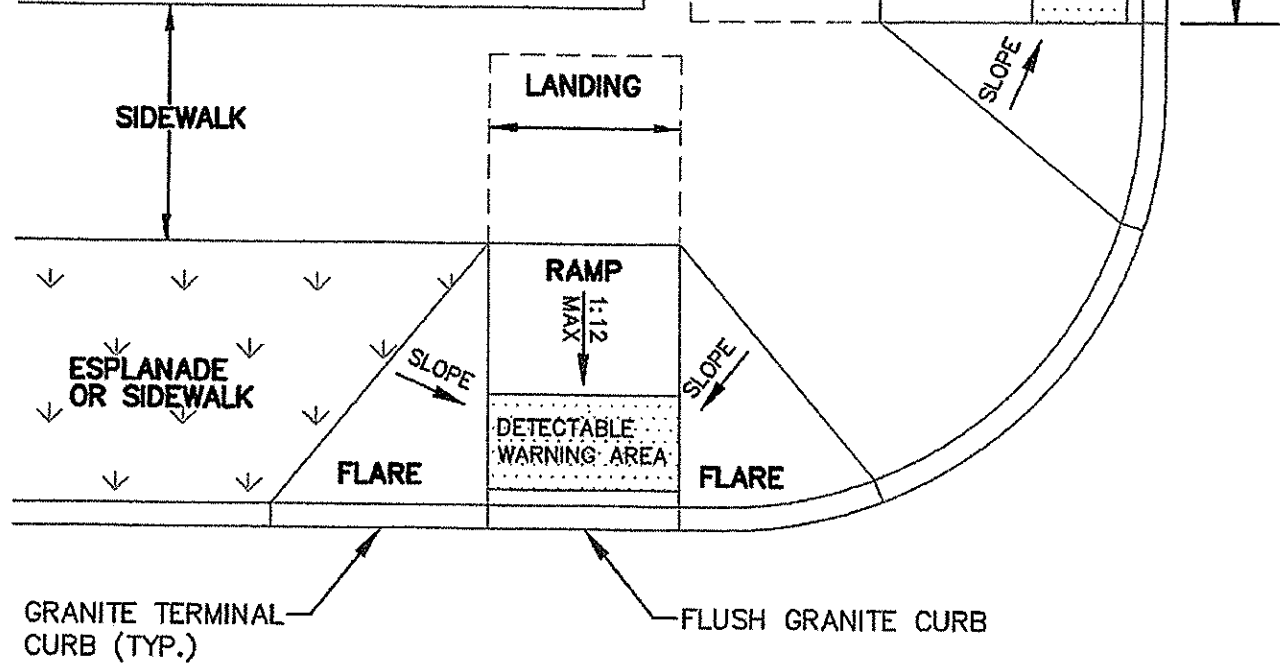


6 PAVEMENT CUTTING & MATCHING SECTION
NOT TO SCALE

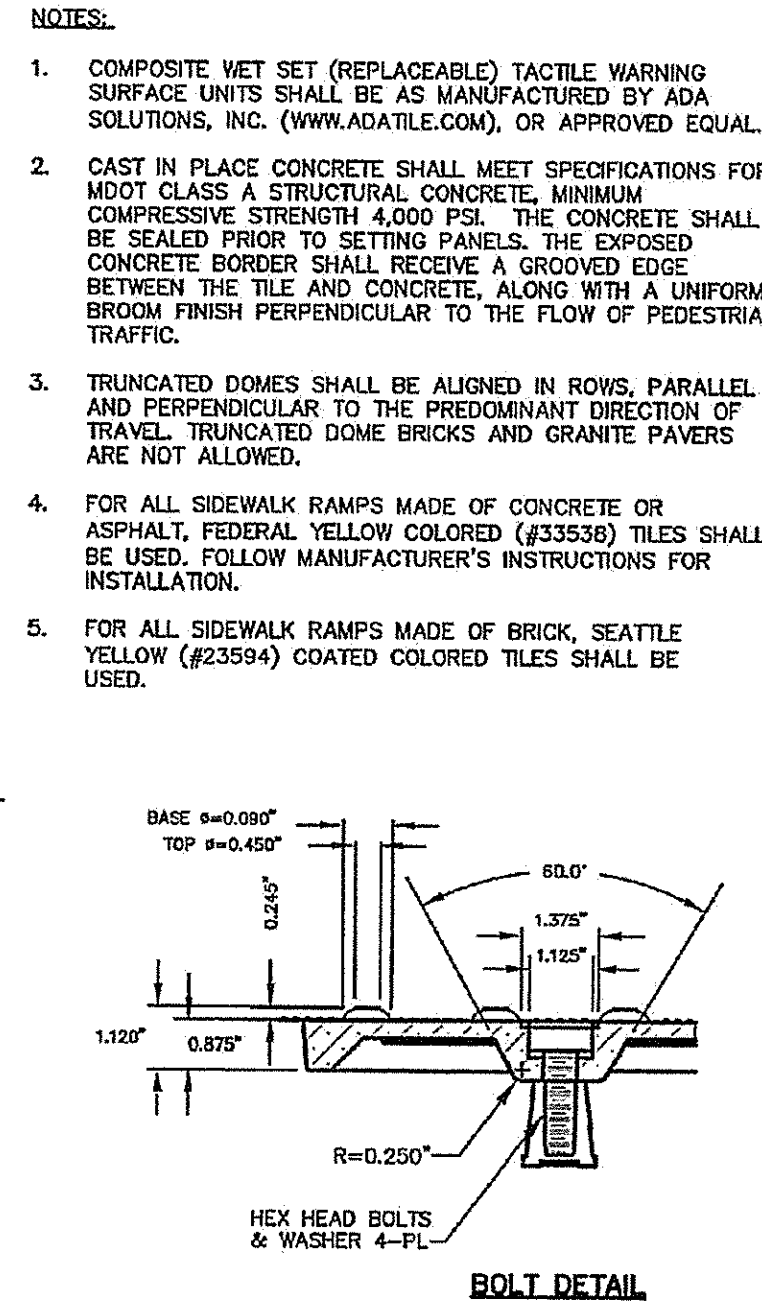
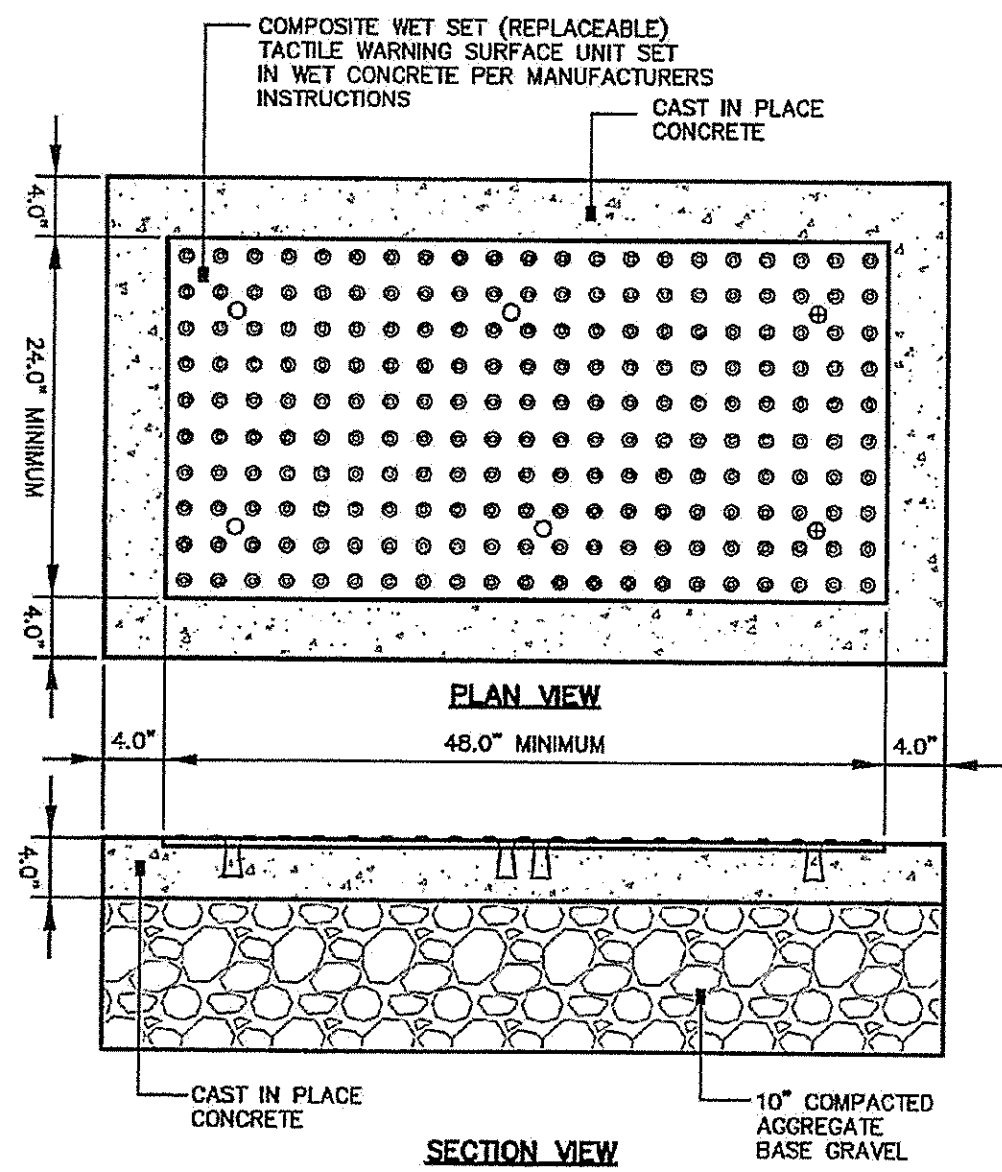


7 PRECAST CONCRETE OIL/GRIT SEPERATOR DETAILS
NOT TO SCALE

NOTES:
ALL RAMPS SHALL COMPLY WITH
ADA STANDARDS.
LANDING AREA MAY BE REQUIRED
BASED ON SIDEWALK DIMENSIONS.
GRANITE CURB ADJACENT TO LANDING
SHALL BE FLUSH WITH STREET.
SIDEWALK MATERIAL PER
CITY SIDEWALK MATERIAL POLICY.
FLARED SECTIONS SHOULD MATCH
THE SURFACE MATERIAL USED FOR
THE SIDEWALK CONSTRUCTION.
FLARE MINIMUM:
4'-0" - SIDEWALK WITH ESPLANADE
7'-0" - SIDEWALK ONLY

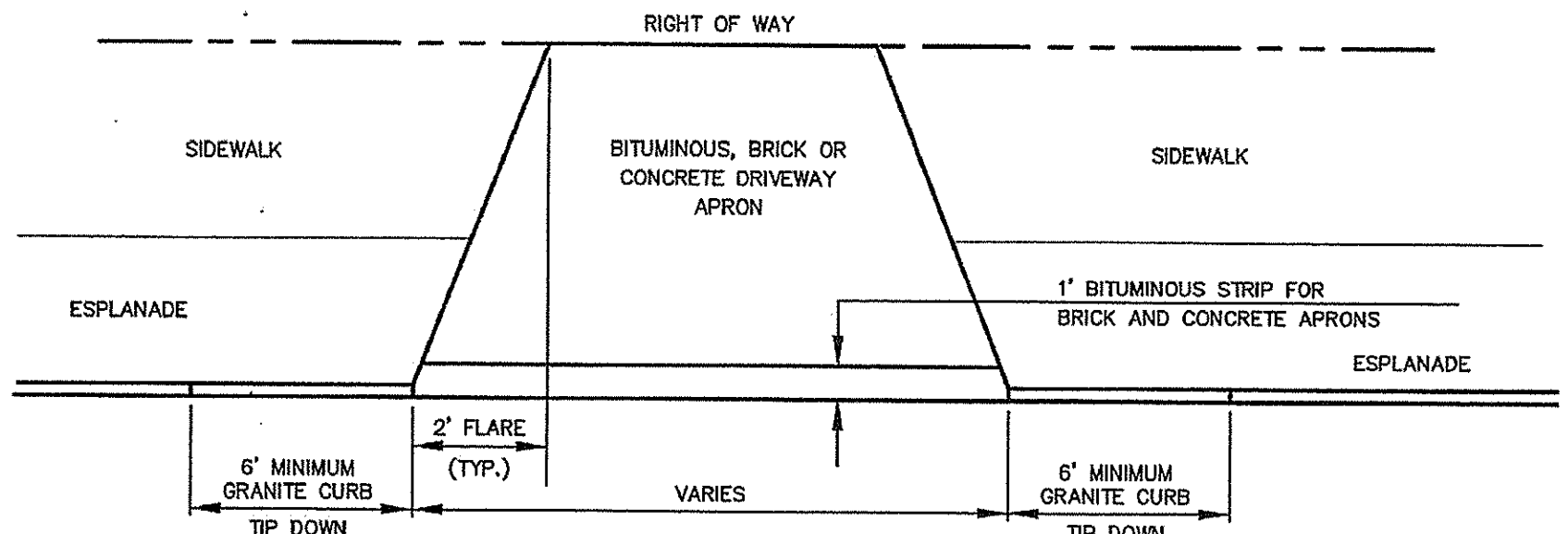


3 PREFERRED SIDEWALK RAMP INTERSECTION (I-6E)
NOT TO SCALE

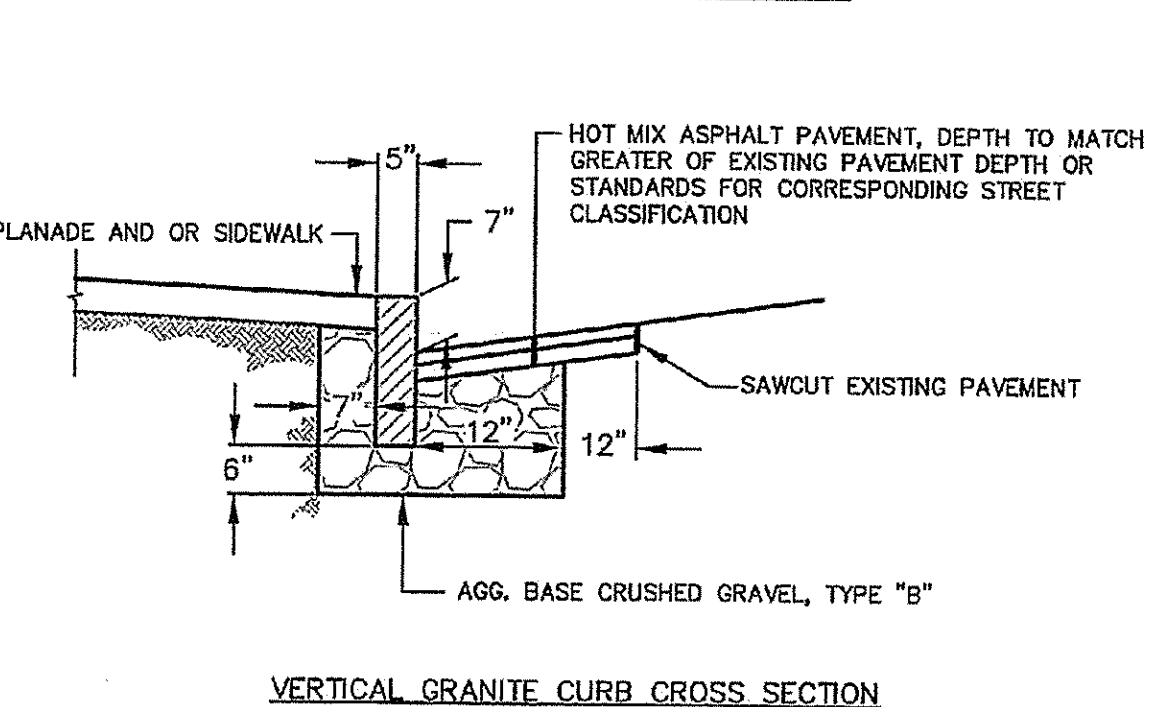
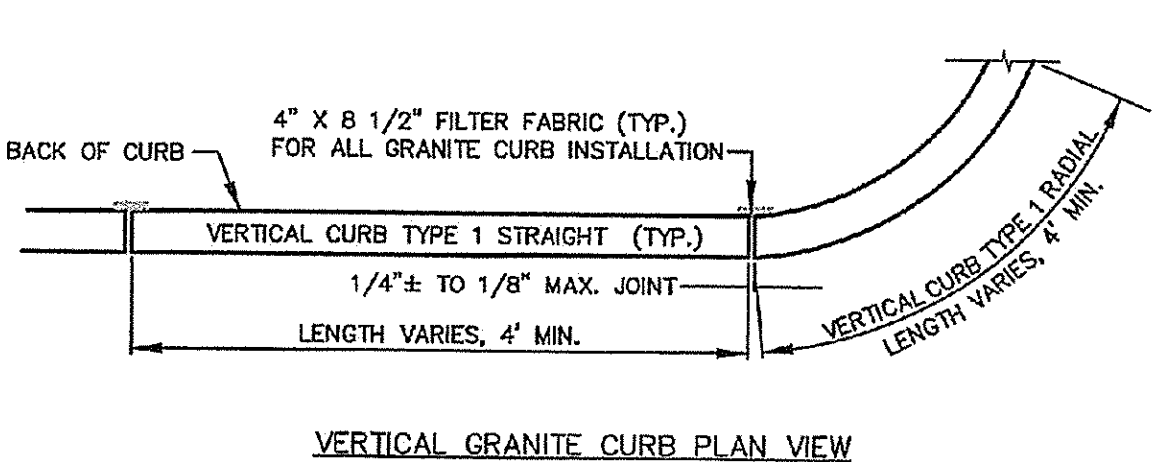
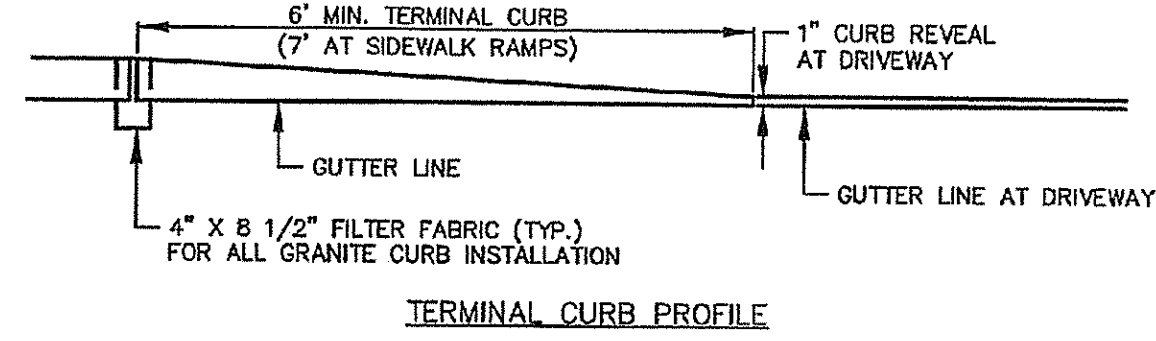


4 SIDEWALK RAMP DETECTABLE WARNING TILE (I-7)
NOT TO SCALE

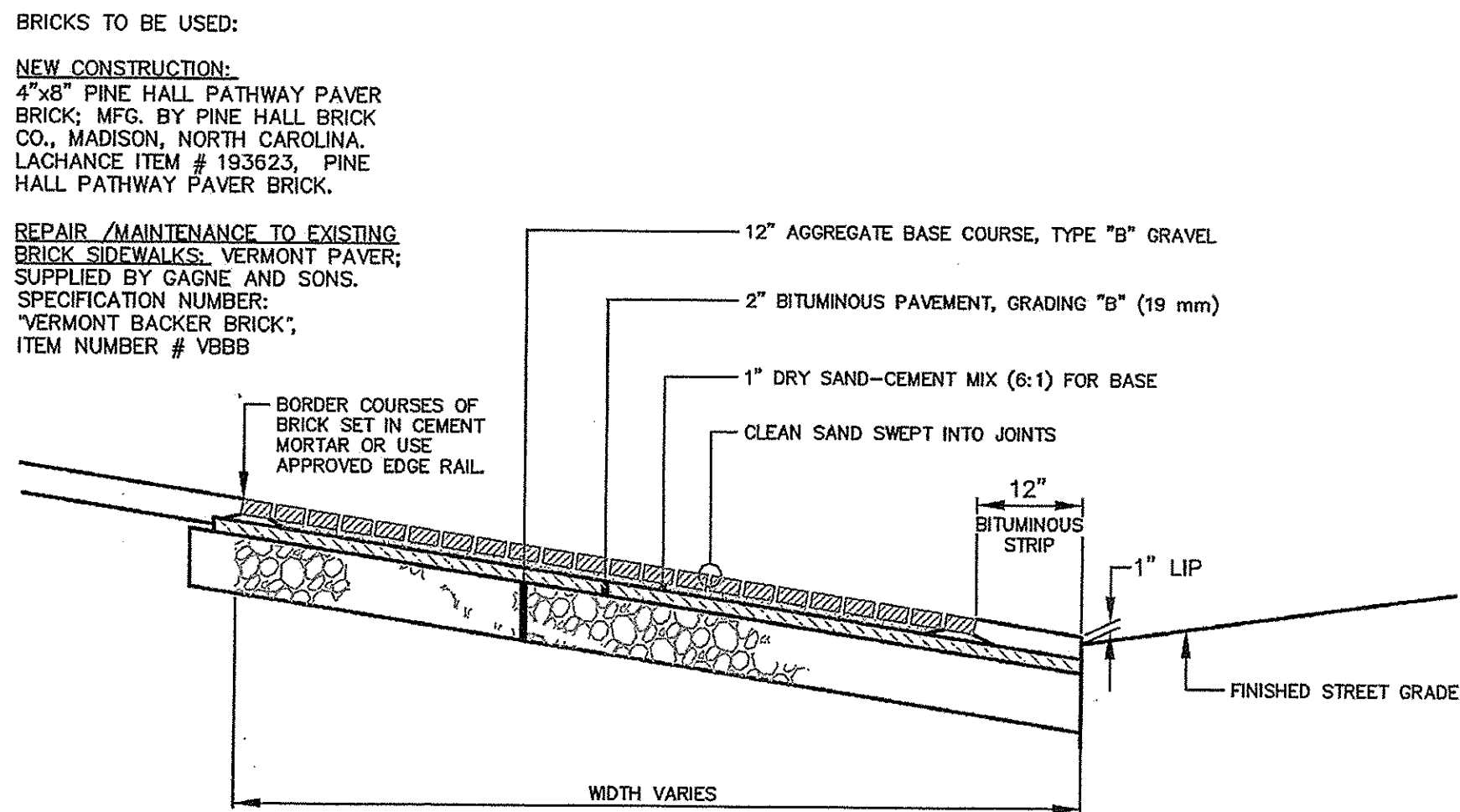
NOTE:
MATCH GRADE OF EXISTING DRIVEWAY
AT R. O. W. LINE, EXCEPT WHEN
DIRECTED OTHERWISE BY CITY ENGINEER.



5 DRIVEWAY APRON LAYOUT (I-9)
NOT TO SCALE



VERTICAL GRANITE CURB INSTALLATION
IN EXISTING STREET (I-17)
NOT TO SCALE



2 BRICK DRIVEWAY APRON WITH BITUMINOUS BASE (I-11)
NOT TO SCALE

SEE SHEET L2.0 FOR CITY OF PORTLAND BRICK SIDEWALK AND CURB DETAIL.

4	2/26/14	100% CONSTRUCTION DOCUMENTS
3	1/27/14	50% PRICING SET
2	1/13/14	REV'D PER STAFF REVIEW
1	1/2/14	CHANGED DRAWING NUMBER
REV.	DATE	DESCRIPTION
118 CONDOMINIUMS, LLC 118 CONGRESS STREET, PORTLAND ME 118 on MUNJOY HILL 118 CONGRESS STREET, PORTLAND, ME		
PINKHAM & GREER CONSULTING ENGINEERS 28 VINNIAH AVENUE PORTLAND, MAINE		
DETAILS		
SCALE:	AS SHOWN	DRN BY: JDC
DATE:	NOVEMBER 13, 2013	DESG BY: TSG
PROJECT:	13143	CHK BY: TSG

C1.7